

continuing to brand an
international fintech
company supporting an
artistic approach to
cancer cures continuing
to design for the best in
international architecture
helping kids higher
education healthcare
engineering and more.

The Pritzker Architecture Prize

[Laureates](#) [About the Prize](#) [Meet the Jury](#) [How to Nominate](#) [Media/News](#) [FAQ](#) [Contact](#) [English](#) [简体中文](#)

Announcing the 2019
Pritzker Prize Laureate:
Arata Isozaki



Arata Isozaki
2019 Laureate



Balkrishna Doshi
2018 Laureate



Rafael Aranda, Carme Pigem & Ramon Vilalta
2017 Laureates



Alejandro Aravena
2016 Laureate



Frei Otto
2015 Laureate



Shigeru Ban
2014 Laureate



Toyo Ito
2013 Laureate



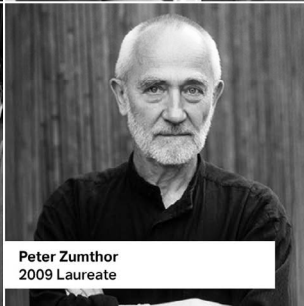
Wang Shu
2012 Laureate



Eduardo Souto de Moura
2011 Laureate



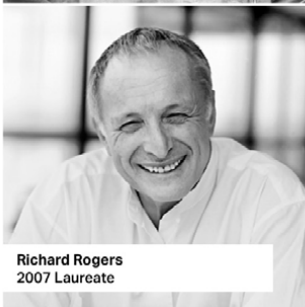
Kazuyo Sejima and Ryue Nishizawa
2010 Laureates



Peter Zumthor
2009 Laureate



Jean Nouvel
2008 Laureate



Richard Rogers
2007 Laureate



Paulo Mendes da Rocha
2006 Laureate



Thom Mayne
2005 Laureate

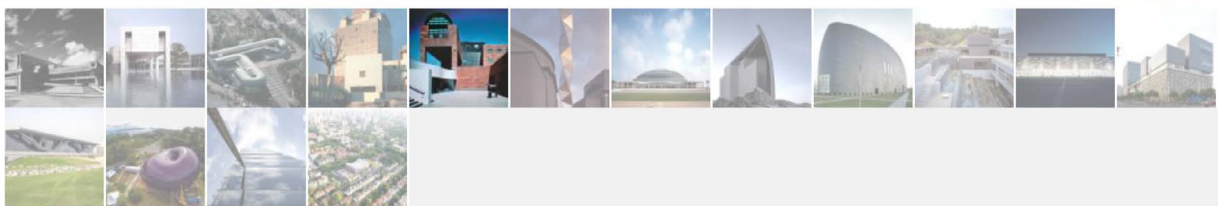
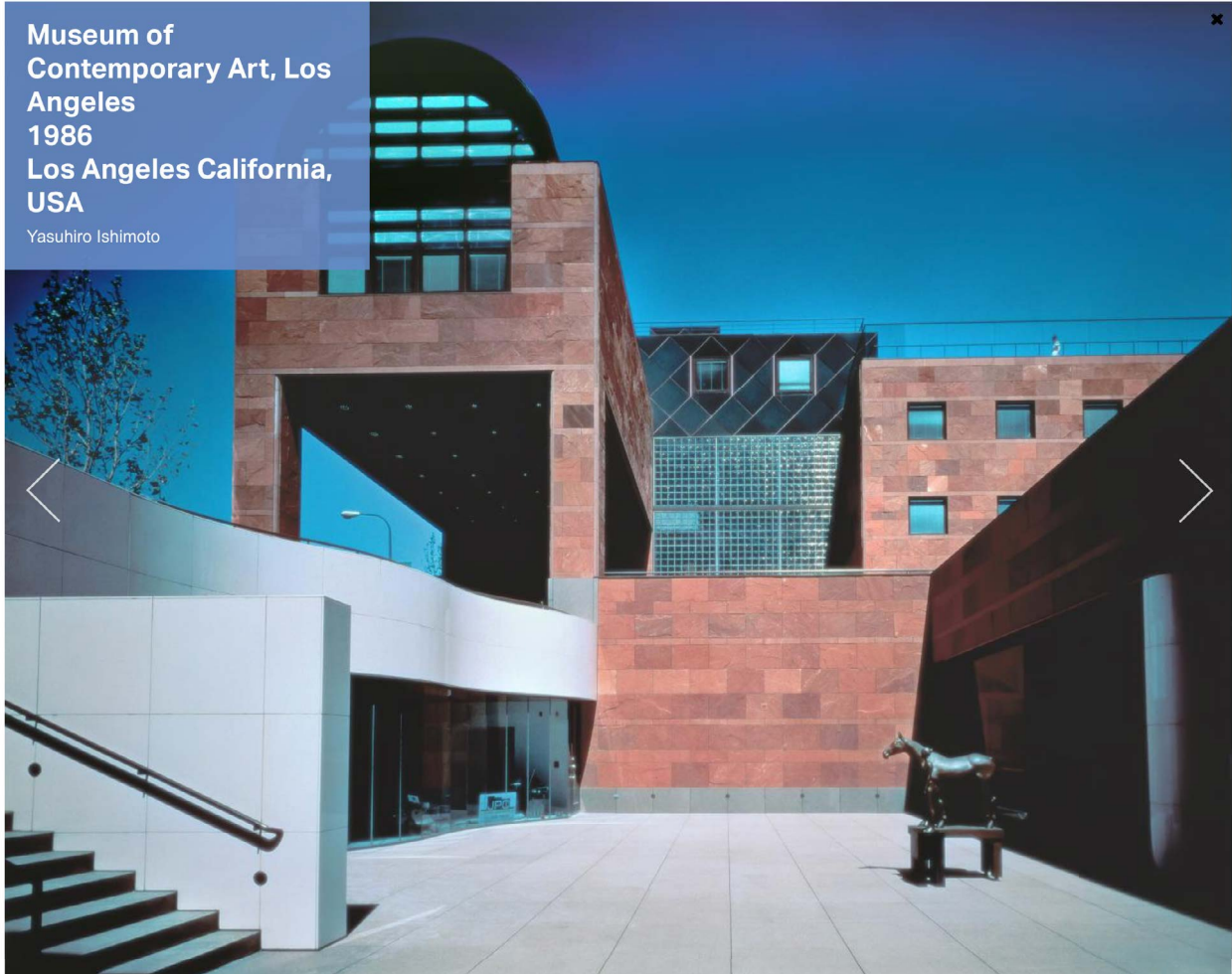


Zaha Hadid
2004 Laureate

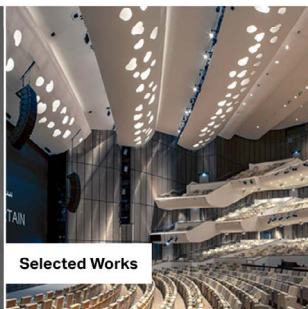
The Pritzker Architecture Prize

[Laureates](#) [About the Prize](#) [Meet the Jury](#) [How to Nominate](#) [Media/News](#) [FAQ](#) [Contact](#) [English](#) [简体中文](#)

Museum of Contemporary Art, Los Angeles
1986
Los Angeles California, USA
Yasuihiro Ishimoto



Arata Isozaki Biography



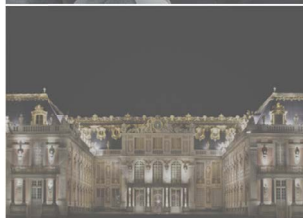
Selected Works



Announcement

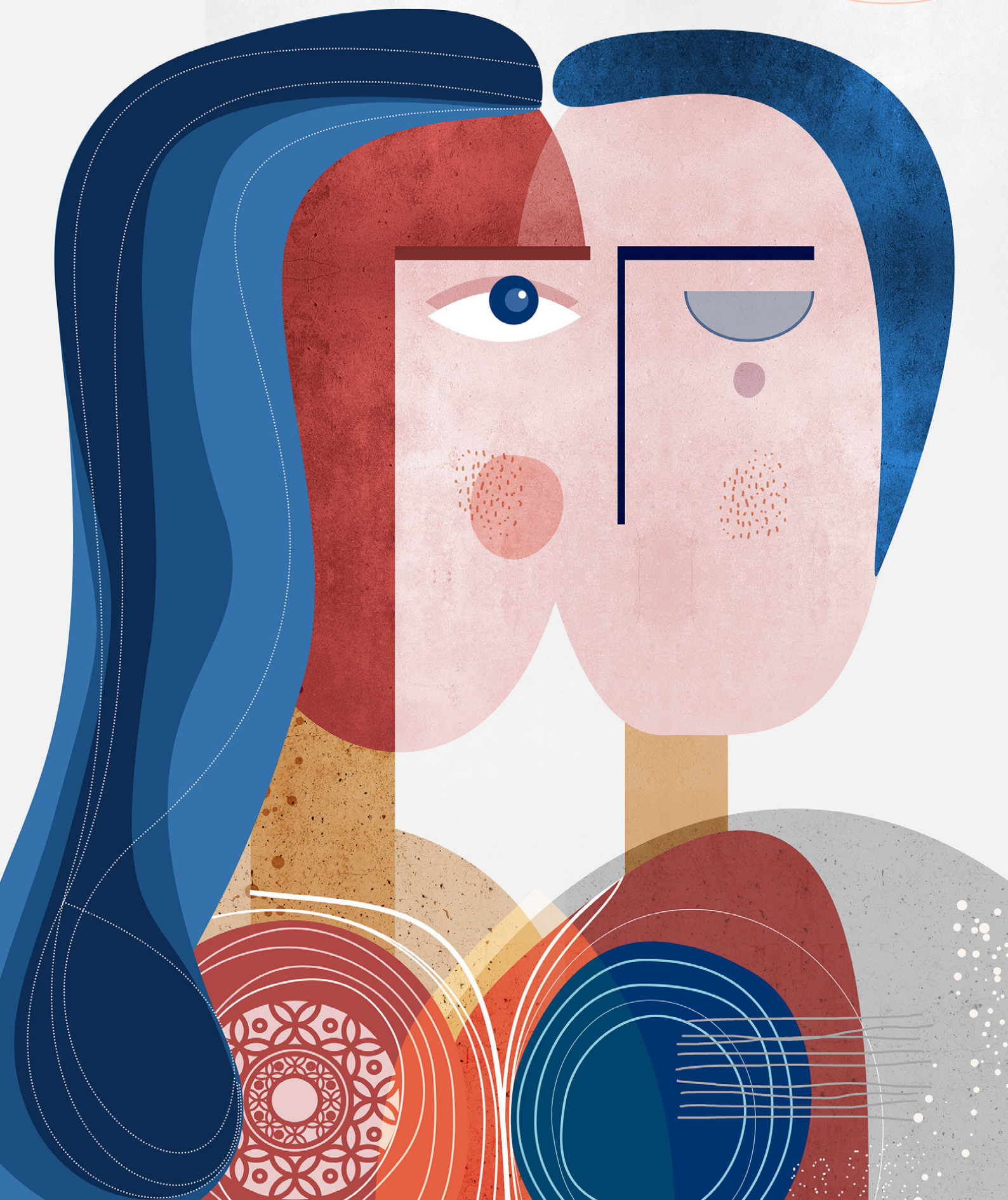
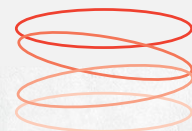


Jury Citation



Twist Out Cancer Annual Report 2018-2019

TWIST
OUT
CANCER





iearchdesign

Edit Profile



400 posts

4,018 followers

219 following

IE Architecture and Design

A vibrant and diverse community.

Expanding the boundaries of traditional education to respond to a changing world



iearchdesign



students in places such as the Royal Glass Factory of La Granja or the IE University FabLab, the manufacturing space of IE School of Architecture and Design. Among the works are large containers and vases made using the blown glass technique, a study of a wide variety of glasses, different models of wood chairs and the final corporate identities of a series of fictional countries.

#Design #DesignMatters
#StudentProjects #BID
#LearningByDoing #FabLabs

@ieuniversity @iecampuslife @edgarg
Photo credit: @robertoarribas

3w



Liked by [diana_mokhallati](#) and others

JANUARY 13

Add a comment...

Post



Courage in Practice: 5 Principles for Peak Grantmaking

Brininstool + Lynch
Making Architecture





Almost Home Kids™
Share the Care

2019 Annual Report



WORK
us. Understanding
DNA can provide valuable
de your health care.

Test may uncover
e certain diseases, such as
ease, more likely for you.
ay help you and your
adjust your care to keep you
ible.
esting reveals a difference,
mbers could also benefit from
on.

detect if you are a "carrier" of
tic conditions that will not affect
ffect your children or other family
This can help you make informed
out your future family. Your adult
may also benefit from this informati
y also learn of lowered risks for some
disorders for you and your children.

Does the testing work?
se a small amount of your blood to look
our DNA. The test will focus on the
ts of your DNA that most affect your health
d health care.
ne results of your test go into your health
ecord, available to you and all of your health
care providers.
Genetics experts at the Genomic Medicine
Resource Center are available to explain your
results and answer your questions.



he patient
ic DNA Test.
resource Center
t form and

Who can get the Genomic DNA Test?
The test is available to you if:
• You are at least 18 years old

The Genomic DNA Test: Understanding Your Health Risks



Many things determine your health.
One important factor is your genetics.

802.847.8135
DNAtest@uvmhealth.org

Important: The UVM Health Network will never call you on the phone to ask you to get this test. Testing is arranged through your health care provider only by your request.

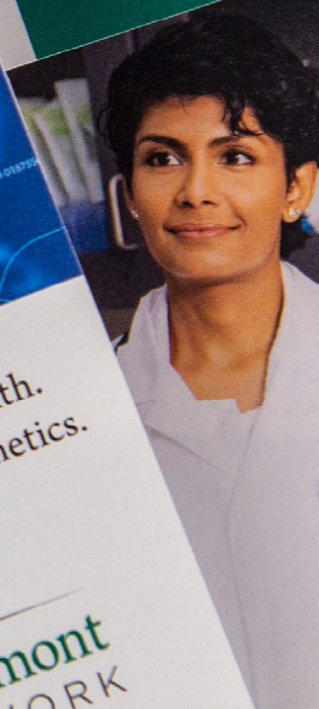
THE
University of Vermont
HEALTH NETWORK

Is it my choice to get the test?
Getting the test is optional – it's your choice. If you have questions about whether the Genomic DNA Test is right for you, a genetic counselor with our Genomic Medicine Resource Center can help.

Is this research?
We are offering the Genomic DNA Test as part of your clinical testing. However, your health and genomic data can help researchers learn more about health and disease. If you choose, you can securely share your data with us through our partner, LunaDNA. Learn more at learn.lunadna.com/uvmhn



Questions?
Contact the Genomic Medicine Resource Center
802.847.8135
DNAtest@uvmhealth.org



- Contact the Genomic Medicine Resource Center for an information packet for the Genomic DNA Test if you still have questions.
- Read and sign the informed consent form and return it to your primary care office.

Many
One in

Questions?
Contact the Genomic Medicine Resource Center





Ulska +
Associates

UChicago
Creative



THE UNIVERSITY OF
CHICAGO

**BRAND IDENTITY
EVOLUTION**

tion
Office



Paranapiacaba

Office
UrbanWorks²⁵




Planning
UrbanWorks²⁵

INTERACT

athering spaces
spots in which to
advance the

SOWLAT
Structural Engineers

Projects About Us



ONE UPTOWN, 2619 McKinney Ave, Dallas

ONE UPTOWN consists of a residential tower atop a six-level basement.

Development Manager: Stoneleigh Companies, Barrington, IL


Number of Stories: 20

Architect: Humphreys & Partners, Dallas

Building Height: 231 ft

SOWLAT
Structural Engineers

Projects About Us



ONE UPTOWN, 2619 McKinney Ave, Dallas

ONE UPTOWN consists of a residential tower atop a six-level basement.

Development Manager: Stoneleigh Companies, Barrington, IL

Number of Stories: 20

Architect: Humphreys & Partners, Dallas

Building Height: 231 ft

TQL  **STADIUM**

TSYS

globalpayments
Integrated

SOUVENERA

 **HELTZER**
OUTDOOR

 Butterworth
Foundation

Advanced**MD**

 **V CAPITAL**



The Pritzker Architecture Prize

We continue to support the most prestigious international prize in architecture, through a wide range of media and materials.



Twist Out Cancer

Twist Out Cancer programs help patients be part of a global community of support through a wide range of programs, initiatives and events.



IE School of Architecture and Design

This Madrid-based university welcomes students from all over the world to experience learning with real world implications. Liska continues to manage the School's robust social media strategy directed at potential students, the architectural community and beyond.



PEAK Grantmaking

This organization focuses on supporting people in the grantmaking industry. Their goal is to educate, transform and simplify the process.



Brininstool + Lynch

With Monacelli Press we designed and produced a 200+ page monograph of their award winning work.



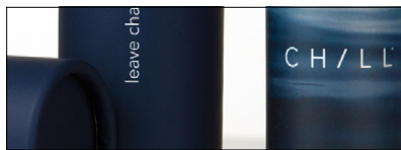
Almost Home Kids

Their annual report supports this expanding organization's exceptional work: helping medically fragile children transition from the hospital to home.



University of Vermont Medical Center

This hospital group in Vermont and New York continues to expand services and educational initiative for a variety of audiences.



CHILL

The meditation and yoga studio continues to expand into a variety of custom branded products and services



Heltzer Outdoor

Michael Heltzer has rebooted his classic furniture line with an emphasis on the outdoors.



The University of Chicago

Working with the creative services team to simplify and clarify the wide-spread branding initiatives of this world renowned institution.



UrbanWorks

UrbanWorks is a socially and environmentally responsible architectural firm with civic, private and commercial sector clients. Liska continues to support their communication efforts.



Sowlat Structural Engineers

We continue to work with this high-profile engineering firm across a variety of mediums.

